

# Middlesex County's Most Dangerous Roads

37 pedestrians were killed on Middlesex County streets in the three years from 2008 through 2010. Tri-State Transportation Campaign's analysis of federal traffic fatality data reveals that Route 1, Route 35, and Route 9 suffered the highest number of pedestrian deaths over the period. 6 pedestrian deaths on Route 1 and Route 35 were in Woodbridge Township.

## Annual County-wide Pedestrian Fatalities

<u>2008</u>	<u>2009</u>	<u>2010</u>	<u>Total</u>
8	18	11	37

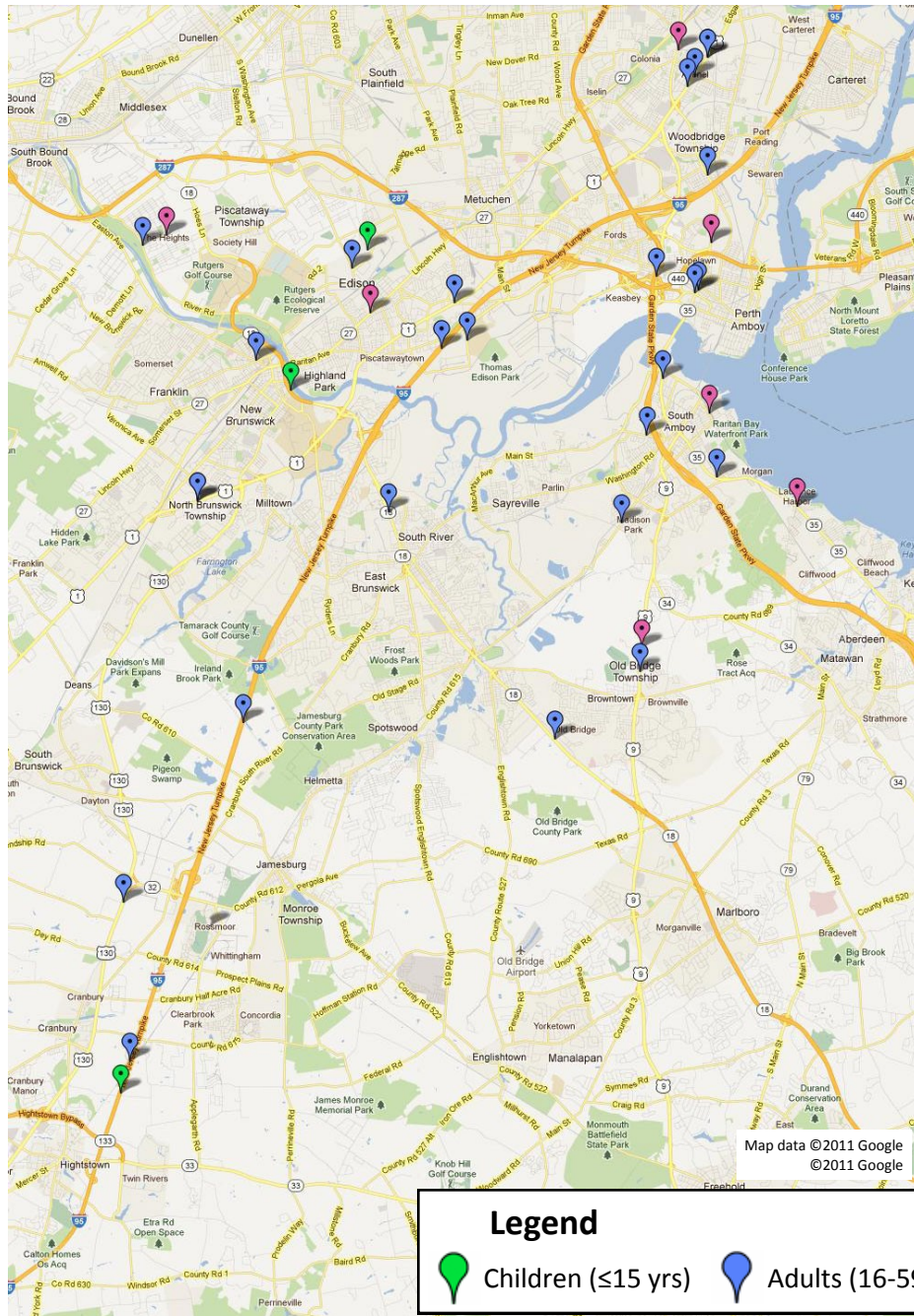
## Most Dangerous Roads

<u>Road</u>	<u>2008</u>	<u>2009</u>	<u>2010</u>	<u>Total</u>
1. Route 1	1	3	3	7
2. Route 35	1	4	1	6
3. Route 9	0	3	1	4

Data source: TSTC analysis of National Highway Traffic Safety Administration's Fatality Analysis Reporting System, 2008, 2009, and 2010.

Note: Analysis of most dangerous roads excludes Interstates, highways and other roads where pedestrians are prohibited.

# Location of Middlesex County Pedestrian Fatalities, 2008-2010



**Rt 1, Rt 35 and Rt 9 were Middlesex County's most dangerous roads for pedestrians.**

**Data source: TSTC analysis of National Highway Traffic Safety Administration's Fatality Analysis Reporting System, 2008, 2009, and 2010.**

**Note: Analysis of most dangerous roads excludes Interstates, highways and other roads where pedestrians are prohibited.**



*For more information, contact TSTC at 212.268.7474*

*The Tri-State Transportation Campaign is non-profit organization working toward a more balanced, transit-friendly and equitable transportation system in New York, New Jersey and Connecticut. [www.tstc.org](http://www.tstc.org)*