

THE REGION'S

# MOST DANGEROUS ROADS FOR WALKING

## Cumberland County

**12 pedestrians were killed on Cumberland County roads** in the three years from 2010 through 2012. Tri-State Transportation Campaign's analysis of federal traffic fatality data reveals that Route 47 had the highest number of pedestrian deaths over the period studied.

### Annual County-wide Pedestrian Fatalities

---

<u>2010</u>	<u>2011</u>	<u>2012</u>	<u>Total</u>
2	4	6	12

### Most Dangerous Roads

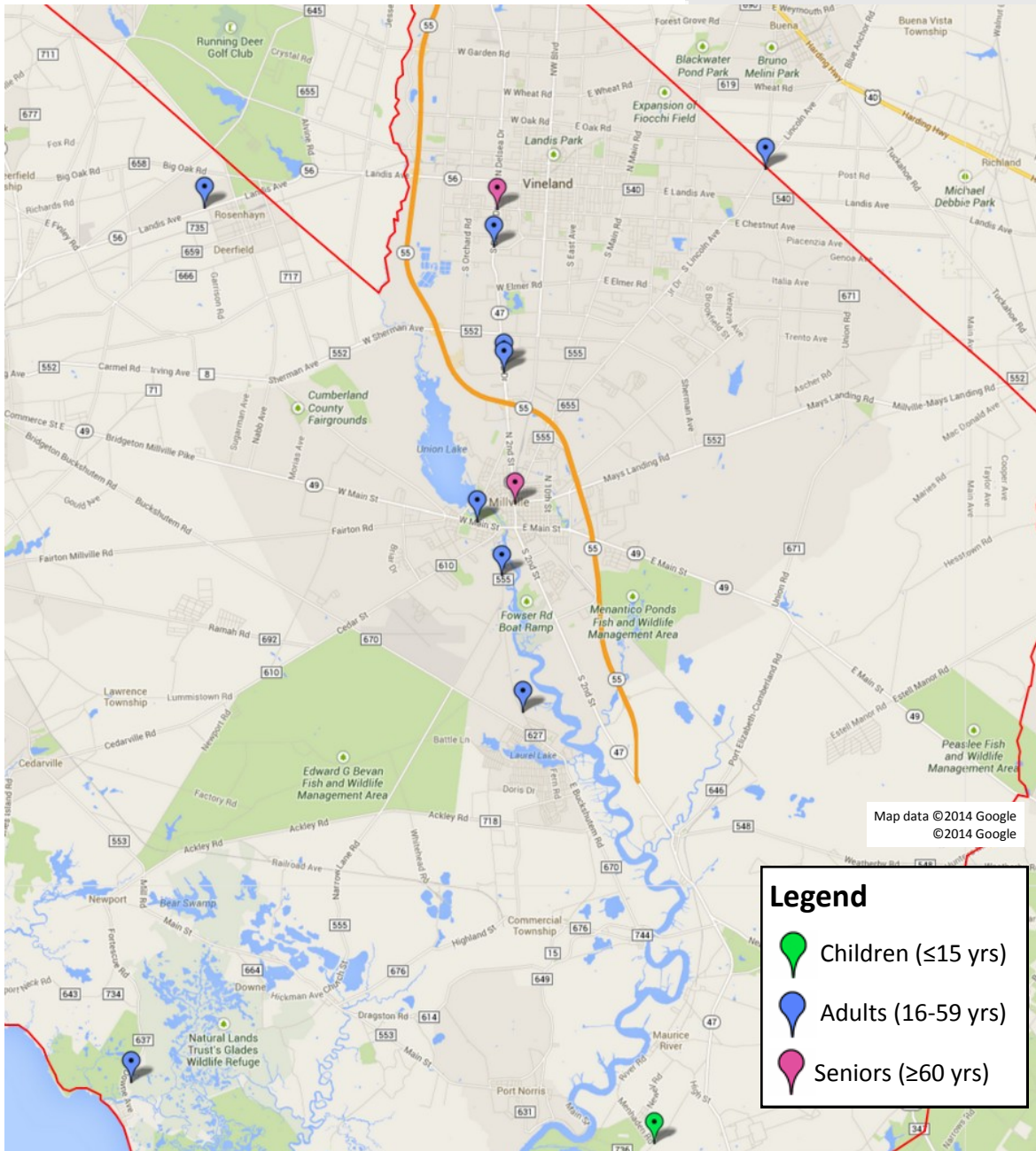
---

<u>Road</u>	<u>2010</u>	<u>2011</u>	<u>2012</u>	<u>Total</u>
1. Route 47	1	0	4	5

TRI-STATE TRANSPORTATION CAMPAIGN



# LOCATION OF CUMBERLAND COUNTY PEDESTRIAN FATALITIES, 2010-2012



**Route 47 was Cumberland County's most dangerous road for pedestrians.**

Data source: TSTC analysis of National Highway Traffic Safety Administration's Fatality Analysis Reporting System, 2010, 2011 and 2012.



**For more information, contact Janna Chernetz at (609) 271-0778 or [janna@tstc.org](mailto:janna@tstc.org)**  
 The Tri-State Transportation Campaign is non-profit organization working toward a more balanced, transit-friendly and equitable transportation system in New York, New Jersey and Connecticut. [www.tstc.org](http://www.tstc.org)