

# US ROUTE 1 NORWALK

# PEDESTRIAN CRASHES



In the three years from 2010 through 2012, there were 169 pedestrian crashes along US Route 1, making it the most dangerous road for pedestrians in Fairfield County.

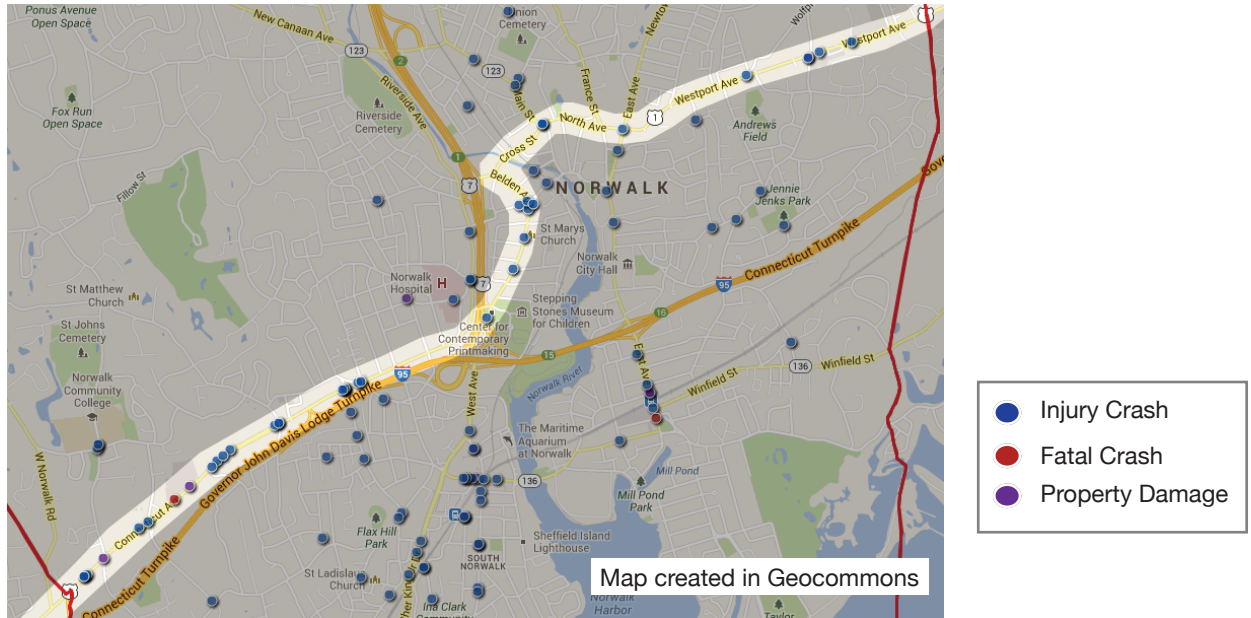


Photo: US Route 1/ Connecticut Ave/ Belden Ave/ Cross St/ North Ave/ Westport Ave in Norwalk.  
Source: TSTC Fairfield Pedestrian Crash Analysis

An online version of this map can be found here: [geocommons.com/maps/329006](http://geocommons.com/maps/329006)

In the City of Norwalk, there were 31 pedestrian crashes, 27 of which resulted in injuries; one of which were fatal.<sup>1</sup>


MUNICIPALITY	2010	2011	2012	TOTAL US ROUTE 1 CRASHES
<b>Norwalk</b>	<b>7</b>	<b>15</b>	<b>9</b>	<b>31</b>
<i>Injuries</i>	<i>5</i>	<i>14</i>	<i>8</i>	<i>27</i>
<i>Fatalities</i>	<i>0</i>	<i>0</i>	<i>1</i>	<i>1</i>

1. A crash not indicated as an injury or fatal crash is a vehicle crash involving a pedestrian that resulted in property damage with no injuries or fatalities

# RECENT AND PROPOSED CHANGES ON US ROUTE 1


The Connecticut Department of Transportation (ConnDOT) recently made spot improvements in Westport, and is seeking funds to add sidewalks in Stratford. However, more comprehensive improvements are needed.

Two of Fairfield County's metropolitan planning organizations have outlined these types of improvements:

 The South Western Regional Planning Agency (SWRPA) conducted corridor studies for parts of US Route 1 in Greenwich/Stamford and Darien. SWRPA also identified spot improvements for several stretches of US Route 1 as part of its bicycle/pedestrian master plan.



SWRPA's studies recommend big changes, such as road diets, bike lanes, back-angle parking, roundabouts, and more.

 The Greater Bridgeport Regional Council (GBRC) completed a complete streets study for Bridgeport and a bicycle/pedestrian master plan for the Town of Fairfield.

GBRC's Fairfield Bicycle and Pedestrian Master Plan recommends complete streets improvements on US Route 1, such as curb extensions and new crosswalks.



1. Photos: Route 1 Greenwich-Stamford Study, [www.swrpa.org](http://www.swrpa.org); Fairfield Bicycle Pedestrian Master Plan, [www.gbrct.org](http://www.gbrct.org)